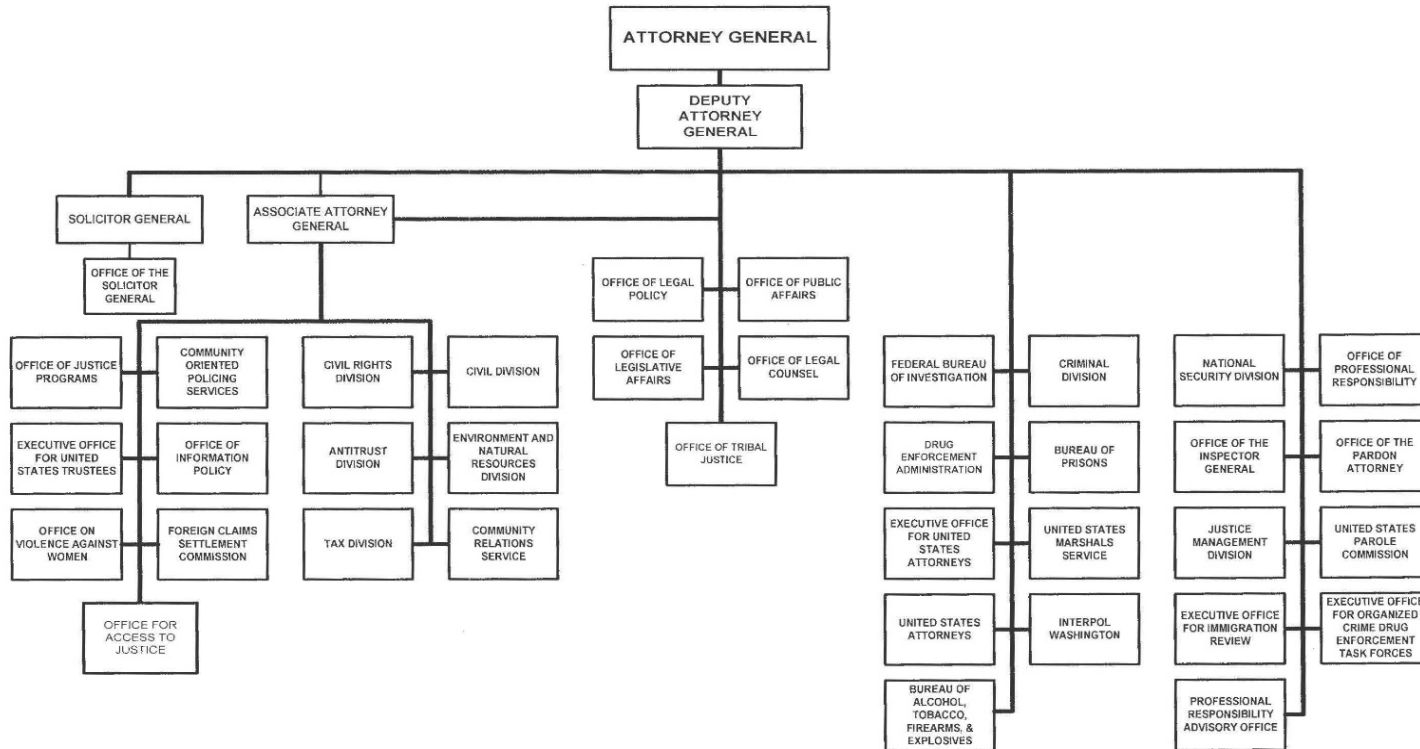


A: Organizational Chart

U.S. DEPARTMENT OF JUSTICE



Approved by: *Loretta E. Lynch* Date: 6/5/2015
 LORETTA E. LYNCH
 Attorney General

Exhibit A - Organizational Chart

F. Crosswalk of 2016 Availability

Crosswalk of 2016 Availability

Asset Forfeiture Program
Salaries and Expenses
(Dollars in Thousands)

Program Activity	FY 2016 Collections and Receipts			Reprogramming/Transfers			Carryover	Recoveries/Refunds	2016 Availability		
	Direct Pos.	Estim. FTE	Amount	Direct Pos.	Estim. FTE	Amount	Amount	Amount	Direct Pos.	Estim. FTE	Amount
Mandatory Expenses, Indef Auth	25	28	1,222,062	0	0	0	1,013,189	105,666	25	28	2,340,917
Investigative Expenses, Def Auth	0	0	20,514	0	0	0	0	0	0	0	20,514
Unobligated Balance Rescission	0	0	-458,000	0	0	0	0	0	0	0	-458,000
Total Direct	25	28	784,576	0	0	0	1,013,189	105,666	25	28	1,903,431
Balance Rescission			0			0	0	0			0
Total Direct with Rescission			784,576			0	1,013,189	105,666			1,903,431
Reimbursable FTE		0			0					0	
Total Direct and Reimb. FTE		28			0					28	
Other FTE:											
LEAP		0			0					0	
Overtime		0			0					0	
Grand Total, FTE		28			0					28	

Reprogramming/Transfers

Carryover:

Unobligated Balances. Funds in the amount of \$1,013,189,048 were carried over from FY 2015 from the 15X5042 account. The carried forward balances consist primarily of restricted funds and balances for specific ongoing expenses.

Recoveries/Refunds:

Recoveries and refunds in the amount of \$105,666,044 were realized through September 30, 2016. These monies will be used to pay for the operating expenses associated with forfeiture.

G. Crosswalk of 2017 Availability

Crosswalk of 2017 Availability

Asset Forfeiture Program

Salaries and Expenses

(Dollars in Thousands)

Program Activity	FY 2017 Collections and Receipts			Reprogramming/Transfers			Carryover Amount	Recoveries/ Refunds Amount	2017 Availability		
	Direct Pos.	Estim. FTE	Amount	Direct Pos.	Estim. FTE	Amount			Direct Pos.	Estim. FTE	Amount
Mandatory Expenses, Indef Auth	23	28	1,222,062	0	0	0	639,702	60,000	28	28	1,921,764
Investigative Expenses, Def Auth	0	0	20,514	0	0	0	0	0	0	0	20,514
Unobligated Balance Rescission	0	0	-458,000	0	0	0	0	0	0	0	-458,000
Decision Unit 4	0	0	0	0	0	0	0	0	0	0	0
Total Direct	23	28	784,576	0	0	0	639,702	60,000	28	28	1,484,278
Balance Rescission			0			0	0	0			0
Total Direct with Rescission			784,576			0	639,702	60,000			1,484,278
Reimbursable FTE		0			0					0	
Total Direct and Reimb. FTE		28			0					28	
Other FTE:											
LEAP		0			0					0	
Overtime		0			0					0	
Grand Total, FTE		28			0					28	

Reprogramming/Transfers:

Carryover:

Unobligated Balances. Funds in the amount of \$639,701,903 were carried over from FY 2016 from the 15X5042 account. The carried forward balances consist primarily of restricted funds and balances for specific ongoing expenses.

Recoveries/Refunds:

Recoveries and refunds in the amount of \$60,000 are anticipated through September 30, 2017. These monies will be used to pay for the operating expenses associated with forfeiture.

H. Summary of Reimbursable Resources

Summary of Reimbursable Resources

Asset Forfeiture Program
Salaries and Expenses
(Dollars in Thousands)

Collections by Source	2016 Actual			2017 Planned			2018 Request			Increase/Decrease		
	Reimb. Pos.	Reimb. FTE	Amount	Reimb. Pos.	Reimb. FTE	Amount	Reimb. Pos.	Reimb. FTE	Amount	Reimb. Pos.	Reimb. FTE	Amount
TEOAF	0	0	14,752	0	0	18,452	0	0	17,970	0	0	-482
US Customs and Boarder Protection	0	0	28	0	0	35	0	0	0	0	0	-35
US Secret Service	0	0	28	0	0	0	0	0	0	0	0	0
Collections from PY Agreements	0	0	216	0	0	0	0	0	0	0	0	0
Budgetary Resources	0	0	15,023	0	0	18,487	0	0	17,970	0	0	-517

Obligations by Program Activity	2016 Actual			2017 Planned			2018 Request			Increase/Decrease		
	Reimb. Pos.	Reimb. FTE	Amount	Reimb. Pos.	Reimb. FTE	Amount	Reimb. Pos.	Reimb. FTE	Amount	Reimb. Pos.	Reimb. FTE	Amount
TEOAF	0	0	14,752	0	0	18,452	0	0	17,970	0	0	-482
US Customs and Boarder Protection	0	0	28	0	0	35	0	0	0	0	0	-35
US Secret Service	0	0	28	0	0	0	0	0	0	0	0	0
Collections from PY Agreements	0	0	216	0	0	0	0	0	0	0	0	0
Budgetary Resources	0	0	15,023	0	0	18,487	0	0	17,970	0	0	-517

I. Detail of Permanent Positions by Category

Detail of Permanent Positions by Category

Asset Forfeiture Program
Salaries and Expenses
(Dollars in Thousands)

Category	2016 Enacted		2017 President's Budget		2018 Request			
	Direct Pos.	Reimb. Pos.	Direct Pos.	Reimb. Pos.	ATBs	Program Increases	Total Direct Pos.	Total Reimb. Pos.
Criminal Investigative Series (1811)	0	0	0	0	0	0	0	0
Personnel Management (200-299)	15	0	15	0	-15	0	0	0
Clerical and Office Services (300-399)	1	0	1	0	9	0	10	0
Accounting and Budget (500-599)	5	0	5	0	5	0	10	0
Information Technology Mgmt (2210)	7	0	7	0	1	0	8	0
Total	28	0	28	0	0	0	28	0
Headquarters (Washington, D.C.)	28	0	28	0	0	0	28	0
U.S. Field	0	0	0	0	0	0	0	0
Foreign Field	0	0	0	0	0	0	0	0
Total	28	0	28	0	0	0	28	0

Footnotes:

There are 0 AFMS positions in the Personnel Management (200-299) category, 10 in the Clerical and Office Services (300 - 399) category, 10 in the Accounting and Budget (500-599) category, and 8 in the Information Technology Management (2210) category.

K. Summary of Requirements by Object Class

Summary of Requirements by Object Class

Asset Forfeiture Program
Salaries and Expenses
(Dollars in Thousands)

Object Class	2016 Actual		2017 Availability		2018 Request		Increase/Decrease	
	Direct FTE	Amount	Direct FTE	Amount	Direct FTE	Amount	Direct FTE	Amount
11.1 Full-Time Permanent	25	3,159	28	3,250	28	3,709	0	459
11.3 Other than Full-Time Permanent	0	1	0	0	0	0	0	0
11.5 Other Personnel Compensation	0	22	0	22	0	23	0	1
Overtime	0	0	0	0	0	0	0	0
Other Compensation	0	22	0	22	0	23	0	1
11.8 Special Personal Services Payments	0	0	0	0	0	0	0	0
Total	25	3,182	28	3,272	28	3,732	0	460
Other Object Classes								
12.0 Personnel Benefits		12,598		12,863		13,133		270
21.0 Travel and Transportation of Persons		5,573		5,690		5,809		119
22.0 Transportation of Things		1,873		1,912		1,952		40
23.1 Rental Payments to GSA		15,131		15,449		15,773		324
23.2 Rental Payments to Others		1,719		1,755		1,792		37
23.3 Communications, Utilities, and Miscellaneous Charges		19,206		19,609		20,021		412
24.0 Printing and Reproduction		349		356		364		8
25.1 Advisory and Assistance Services		258,605		297,601		303,851		6,250
25.2 Other Services from Non-Federal Sources		821,213		922,857		915,590		-7,267
25.3 Other Goods and Services from Federal Sources		60,551		61,823		63,121		1,298
25.4 Operation and Maintenance of Facilities		606		619		632		13
25.7 Operation and Maintenance of Equipment		24,466		24,980		25,504		524
25.8 Subsistence and Support of Persons		1,331		1,359		1,387		28
26.0 Supplies and Materials		4,956		5,060		5,166		106
31.0 Equipment		3,526		3,600		3,676		76
32.0 Land and Structures		1,823		1,861		1,900		39
42.0 Insurance Claims and Indemnities		110		112		115		3
43.0 Interest and Dividends		0		0		0		0
44.0 Refunds		22,527		20,000		18,000		-2,000
92.0 Undistributed		7		0		0		0
94.0 Financial Transfer		61,200		0		0		0
Total Obligations		1,320,552		1,380,778		1,383,518		2,740
Subtract - Unobligated Balance, Start-of-Year		-1,013,189		-639,702		-462,533		177,169
Subtract or Add - Transfers/Reprogramming		0		0		0		0
Subtract - Recoveries/Refunds		-105,666		-60,000		-55,000		5,000
Add - Unobligated End-of-Year, Available		639,702		462,533		410,600		-51,933
Add - Unobligated End-of-Year, Expiring		0		0		0		0
Total Direct Requirements	0	841,399	0	1,143,609	0	1,276,585	0	132,976
Reimbursable FTE								
Full-Time Permanent	0	15,841	0	18,452	0	17,790	0	
23.1 Rental Payments to GSA (Reimbursable)		0		0		0		0
25.3 Other Goods and Services from Federal Sources (Reimbursable)		0		0		0		0