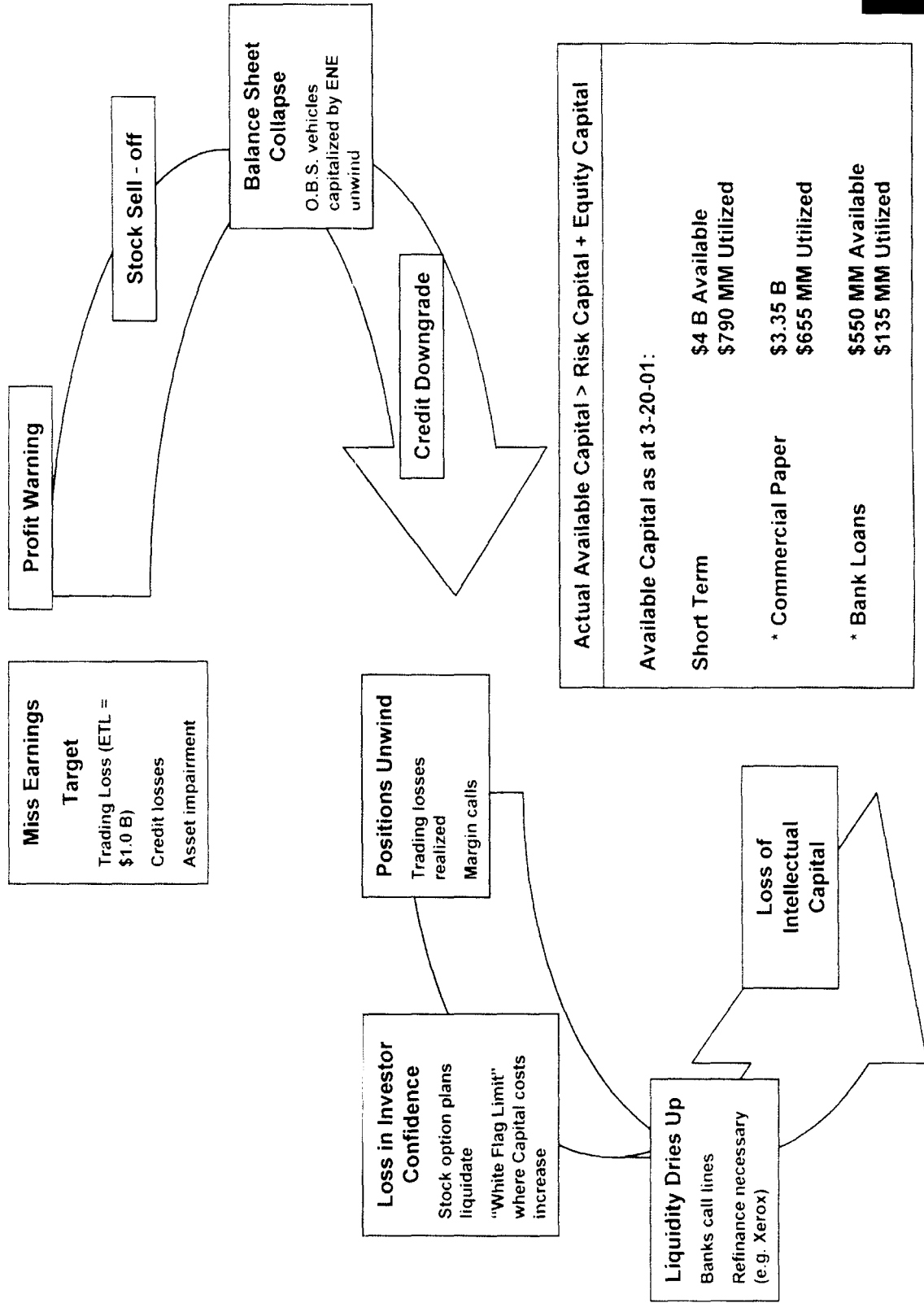


2.c. – Economic Capital at Risk – Link to Actual Capital



Actual Available Capital > Risk Capital + Equity Capital

Available Capital as at 3-20-01:

Short Term	\$4 B Available \$790 MM Utilized
* Commercial Paper	\$3.35 B \$655 MM Utilized
* Bank Loans	\$550 MM Available \$135 MM Utilized